



# The Red Rock

Guest Ranch



# ABOUT THE AREA

The Red Rock Guest Ranch is located in the Glacial Hills region of Kansas. This region occupies the northeastern corner of Kansas and is roughly bordered by the Kansas River on the south and the Big Blue on the west. Geologists named the area based on the theory that glaciers once covered the landscape and then shaped the terrain. Rocky hills, wide valleys, and accompanying floodplains provide a great deal of variation throughout the region. The scattering of pebbles and boulders (some as large as a car) found across the region were transported by glacial movement. The red stones are Rose Quartzite and dot the pastures throughout the area. Thus, the name **Red Rock Guest Ranch**. All of the Quartzite stones you see around the ranch, were gathered locally.

A strip of hardwood forest runs along the very eastern edge of the region which transitions to both forest and prairie. Dense stands of tallgrasses, mostly bluestem, dominate the western part of the region. As would be expected in a region of diverse vegetation, a wide variety

of animals call this area home. Beavers, muskrats, bobcats, coyote, and white-tailed deer are common along with wild turkey and a mix of migratory birds, especially snow geese which can be found in abundance seasonally. The agriculture of this area is more diverse than that of any other part of Kansas. Both beef and dairy cattle graze rough terrain. Corn, soybeans, wheat, sorghum, barley, and alfalfa thrive on loess soil wherever the ground is level.



The Ranch does reside just on the western cusp of this region and the Flinthills are nearly at our backstep to the west. Watch as local geography gives way to rolling and wide open prairie towards our west. Keep your eyes open and you'll notice it for sure!

# WELCOME TO THE RED ROCK

Welcome to the Ranch and home to Bill and Debra Brown since 1998. We are so glad to have you as our guest, hope you enjoy your stay and come back to see us again and again.

Our hope is that we can be folk's *Home away from Home* during their time here. The Ranch has always been a place of adventure. Originally deeded to a Sea Captain in the 1800's, home to several area farmers and their families and renters throughout the 1900's, and in the last two decades home to a Bed and Breakfast, Chuckwagon Dinner & Show, Event Center, Hunting Lodge and simply a great place to get away.

While we no longer have dinners and shows on a regular basis, we make a good breakfast. We've yet to house a sea captain, but we've got a new pond and dock. And we're not row cropping, but we've been working at restoring patches of native prairie and wildlife habitat, while continuing to provide glimpses of a way of life and agriculture that is all around and essential to many of us. Please enjoy your stay with us and please let us know if you need something!

*Debra & Bill Brown*  
Proprietors, Owners & Your Newest Neighbor





"We envisioned a place where families could find a great room and peaceful stay nestled among our rural community that boasts a hospitality long forgotten in todays day and age ."

- Debra & Bill Brown, Owners



## Bird's eye view of the Ranch

Need a little perspective on the Ranch? Let us give you hand...

1. The Main House
2. The Guest House
3. The Lodge
4. The Pavilion
5. Front Drive
6. Back Drive



# GETTING YOUR BEARINGS

The Red Rock property is more than just a building. It is a handful of structures, buildings, spaces and designs that are a mix of necessity, repurposing, retooling, some dreams and years full of conversations starting with "What if we..." and a bit of sweat.

As you'll see though, its also nearly 160 acres of wide open spaces that is just about always available to your use while you're a guest here with us. Take a gander and get your bearings.

## **THE RED ROCK GUEST RANCH**

4340 270th Road

Soldier Ks. 66540

(h) 785.834.2552

(c) 785.364.7115

[www.theredrockguestranch.com](http://www.theredrockguestranch.com)

[theredrockguestranch@gmail.com](mailto:theredrockguestranch@gmail.com)

fb: @theredrockguestranch



# ADVENTURES TO TAKE

There are lots of things to keep you busy while visiting us. Besides just enjoying the peace and quiet of the countryside you can take in lots of other things.

**Several miles of groomed walking trails.** The Ranch is 160 acres and the trails run throughout the property. Some are easy, some moderate and others more aggressive. The trails pass through 14 acres of natural wildlife habitat all planted to native grasses and wildflowers. *South Trailhead just across the road and mailboxes, green gate. North Trailhead west of Front drive just inside Prairie gate.*

**Enjoy Bird Watching.** More than 40 species of birds have been identified here at the ranch. We have a booklet for you to carry with you that has pictures of the birds to watch for along with information about their habitat, their description, and what the call sounds like.



# OR HOW ABOUT...

**Wildflowers.** We have identified 23 species of native wildflowers along the trails at the Ranch. See how many you can identify or pick a native bouquet if the time is right! *We have a checkoff booklet with pictures and yearly bloom times.*

**Farm animals.** Do you love animals? We certainly do. While visiting the ranch you will have the opportunity to see cattle, horses, miniature donkeys, miniature goats, lambs, geese, chickens, and ducks.

**Self-Guided Audio Auto Tour:** Do want to explore the local area beyond the Ranch? We offer a self-guided audio auto tour which explores the interesting historic features in the area and takes you through the beautiful glacial-hills countryside.

**Ranch Scavenger Hunt:** A great activity for young and old alike. You will have fun exploring the ranch and finding a list of items unique to the ranch. *There is a prize if you find them all.*







**Fishing.** We have three farm ponds stocked with a variety of fish. Forgot your fishing pole? *Don't worry. We have poles and tackle available for your use, just hollar.*

**Swimming.** One of our ponds has a dock with a slipper slide into the water and a sand beach area. *Please understand though there is no lifeguard on duty and adults must be present at ALL TIMES.*

**Kayaking.** We've got a small "fleet" of water worthy vessels that are your's to command on the large pond across the road. A couple adult and youth kayaks, and a paddle boat. Life Jackets and paddles are stored nearby and required anytime folks are out on the water. Let us know if you'd like them out and ready *As with swimming there are no life guards present and adults must be present at all times.*





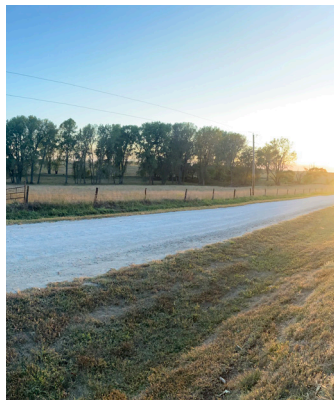


## OR MAYBE...

**Pavilions and Patios.** There are several located throughout the property with table, chairs, swings, BBQ grills and outdoor kitchens.

**Campfire Fun.** Do you enjoy sitting around a campfire telling stories and singing songs? Well, we have three fire pit areas for you to enjoy. *We'll provide the firewood and flame.*

**Indoor/Outdoor Games.** We have many to offer. Corn hole, croquette, horseshoes outside and board games, cards, chess, checkers and a pool table inside.



**Star Gazing:** There is nothing quite like the night sky when there is no man-made light to dim the view. We provide lanterns if you want to venture out on the trails or just sit on a bench by the Pavilion and enjoy the view. *Star gazing app ideas available upon request and guided by request for a fee.*

**Archery Range:** We can easily make sure the archery range is set up for you to take some time honing your archery skills outdoors here. *Please be safe and participate at your own risk.*



## OTHER ACTIVITIES\*

**Hayrack rides:** We can offer hayrack rides which take you on a tour of the property and then end at a campfire for roasting marshmallows, which we provide. Given enough notice and heads up and we can tailor the timing and ride to about any part of the day.

**Buffalo viewing:** Just a few miles from the ranch is a large herd of buffalo. We can arrange an outing to view the buffalo in their natural habitat and provide a guide to explain their significance

to our area. As well as how they historically have shaped much of Kansas' story, while also cultivating the prairie around us.

**High Tea at the Red Rock Ranch:** A British tradition since the mid-1800s, afternoon tea is available at the Ranch. We offer an assortment of teas to choose from or if you prefer coffee, we also have a large selection of coffees to choose from. Tea/coffee is served along with a variety of finger sandwiches, scones with locally crafted jams and jellies and sweets. Please let us know the night before if you'd like to partake.



**Try your hand at Milking:** Our neighbors across the road have dairy cows and will gladly let you participate in the milking process. You must be up early for this activity though; milking starts at 7AM sharp. You will fall in love with their gentle Guernsey and Jersey cows and learn why Jersey milk has traditionally been perceived as a luxury across Great Britain and their neighboring countries. Back at the Ranch you will have a chance to taste the delicious glass chilled milk for yourself or try your hand at making some butter!

**Guided Archery and More :** Several of our activities can be guided if you desire a more tailored and coached approach to these activities. Some of these extra guided activities may incur various fees or honorariums that we'd let you know right off the top and would discuss with you before hand.

\*(Because of the amount of setup, planning, supplies and outside guide honorarium involved in these activities, each requires an added fee. We do this to honor our neighbors' time and effort. But as always, feel free to ask and inquire what is available and what it might cost.)





**WI-FI:** Wi-fi service is available throughout the property. The network is **TheRedRock** and the Password is all lower case: **welcomehome**. If you have problems logging in, please let us know.

**TVs:** We have placed televisions throughout the facility in all of the common areas. Most are ROKU TVs which give you access to many free channels while many are also attached to antennas for local channels. *Why no TVs in your bedroom?* This is your chance to get out and enjoy the beautiful countryside, fresh air and time visiting with friends and family. An opportunity to sit by a campfire, gaze at the stars, read a book or have some time to yourself.

**OUR WATER:** We hear this question quite often and the answer is yes. Many people assume that since we are in the country, we have well water, but we actually are on water provided by Rural Water District #3. And in fact, we are

# A FEW NOTES ABOUT OUR FACILITIES

-one of the test sites for the Water District, so the water here is tested regularly. We provide bottled water when you check in for your convenience. But did you know that the source for bottled water is usually a big municipality such as the Dallas Water System. So yes, we have great tasting, safe water.

**PETS:** We love them, but our insurance company doesn't. So, unfortunately, we don't allow pets as a general rule. We make exceptions for designated guide/service dogs. An undisclosed pet will result in an additional fee of \$50.00.

**GUEST LAUNDRY:** Laundry facilities are provided for all of our extended stay guests. Please use them responsibly. Do not overload the washer or dryer and be sure to clean out the lint trap after every use. Hunters, please do not put dirty clothes in the dryer, hanging out over a chair during the day and close to a vent does wonders for coveralls.

**SMOKING:** We are a smoke free facility. No smoking is allowed in any of the buildings and only outside away from windows and doors. Please don't throw your cigarettes butts on ground. Ask, and we will provide you with a disposal container if you need. ***ALSO PLEASE DO NOT THROW BUTTS ON THE GROUND ANYWHERE ALONG THE WALKING TRAILS OR AROUND THE PONDS.*** Grass fires catch and spread quickly! An additional charge will be added to your bill if we have to pick up butts or find evidence of smoking in the facility

**PHONES AND CELL SERVICE:** We are in a remote area and our cell service often leaves something to be desired. We do get Verizon if you are outside and inside some of the buildings. If you need to make a long distance call, we have a land line in the main house which is available for your use.

**HOUSEKEEPING:** Your room will be cleaned, sanitized and prepared for your stay prior to your arrival. We do not do daily house-keeping but fresh towels will be provided upon request.

**CHECK OUT:** Check-out time is 12 noon. If you need a later time, please let us know and we will check availability. Payment is due at or before check-out, and we accept all major credit cards, cash and checks. Don't worry about making your bed. Be sure to check for all personal belongings. If you used the kitchen facility, please wash and put dishes away.

# SERVICES & REGION

While the Red Rock has plenty of wide open spaces and quiet afternoons, we know folks often need supplies, groceries and other services. We are situated within 20 minutes of fuel and most other services Monday-Saturday. Just far enough to get away and close enough to feel like you aren't lost.

**Holton** (pop. 3300) is 20 miles Southeast. Grocery Store, Several Fastfood chains, Steakhouse, WalMart & Hardware, Mechanics & 24 Hr Fuel.

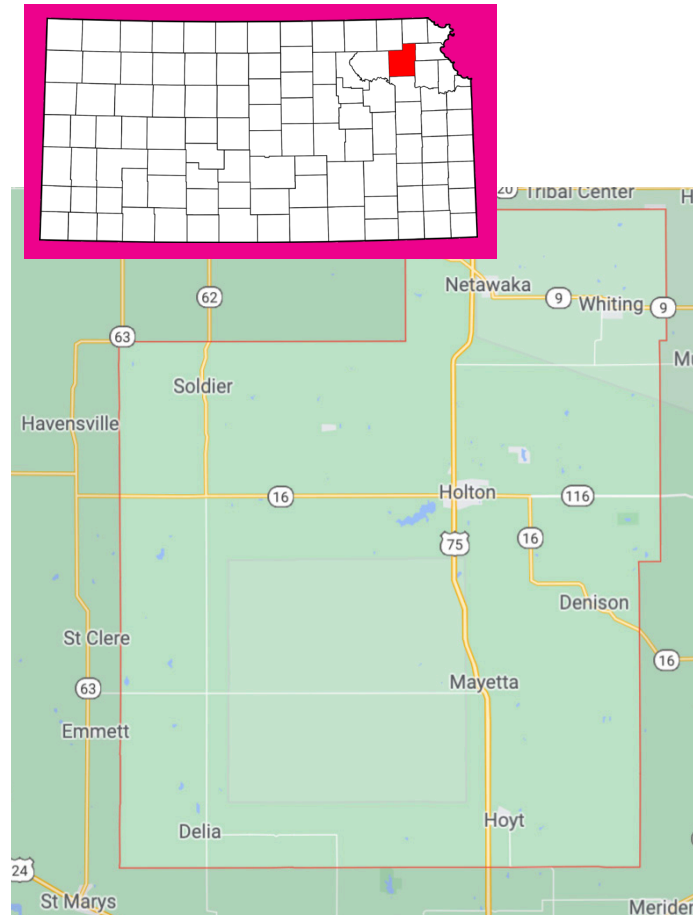
**Onaga** (pop. 800) is 20 miles West. Full line Grocery Store, Pharmacy, Great Hospital, Mexican & American Restaurants, Mechanics & 24 Hr Fuel.

## Small Town Charm

**Soldier** (pop. 130) 1.5 miles West. Small Town Bar/Grill (M-Sa, Br&Lu&Su), Post Office, Christian Church.

**Havensville** (pop. 125) 10 miles West (County Road) Small Town Grill (T-Su,Br&Lu), Post Office, Christian Church.

**Goff** (pop. 100) 10 miles North (62 Hwy). Small Town BBQ (W-Su,L&Su)/Grill, Daytime Fuel.





# OUT AND ABOUT IN THE AREA

## Lakes & Fishing

Walk in Fishing, several locally within 5 mile radius.  
Banner Creek Lake, Just outside Holton, KS. (20mins)  
Pott. County Cross Creek Lake, Southwest (20mins)

## Public Hunting Areas

Walk in Public-Access Lands, several locally (5-10 miles)  
See <https://bit.ly/rrgrhuntmap> for more info.

## Hospitals

Onaga (20 mins), Community Healthcare System  
Holton (20 mins), Community Healthcare System Clinic  
Holton, (20 mins), Holton Community Hospital

## Churches

Soldier (2 mins), Soldier Christian Church  
Circleville (10 mins), Circleville Christian Church  
Bucks Grove (10 mins), Bucks Grove United Methodist  
Holton, Onaga & Corning (20 mins) Catholic Church

## Hardware/Tool

Holton (20 mins), Tarwater Farm & Home, Tractor Supply  
Seneca (30 mins), Heinen True Value & Bomgaars

## Grocery

Holton (20 mins), Cecil K's & Walmart  
Onaga (20 mins), Onaga Country Market



# A COMMITMENT TO PRACTICAL CONSERVATION IN PRACTICAL WAYS

We are working to reduce our carbon footprint. If you haven't noticed them, we have 2 large solar arrays located east of the Lodge. All lightbulbs have been replaced with LED bulbs and outside we use solar lighting where possible.

Over the past 3 years we've replaced many of the HVAC units and Appliances with Energy Star or high efficiency options when available and possible. Many of our newer central air units are either geothermal, hybrid fuel or totally electric in order to take greater advantage of our small scale generation efforts. We are proud member-owners of our small rural electric co-op and continued to be excited to partner with them in many ways.

We recycle all plastic and a container is located in each building for that purpose. Please help by placing your plastic recyclables in the containers. You can also help us conserve water by reusing towels. Please remember to turn off lights when you leave your room. Do not leave electric space heaters or boot warmers running when you are not present. Your help is greatly appreciated!

## **CONSERVING BEYOND ENERGY**

We also are working to reasonably conserve the land, resources and community we live in as well.

The fourteen acres west of the main house have been returned to native prairie grasses, flowers and plants. While it is not exactly as it would have been 100 years ago, the root structure, diversity of flora and potential for native wildlife habitat is greatly improved and many steps closer to it's original state than the cool season grasses that previously populated it for a season.

The newer pond across the road to the south is a water and erosion conservation effort to help mitigate an erosion of topsoil that had went on unchecked for many years and quickened by the loss of native plants and their deep roots. It also is seasonally home to many migratory birds and the new home to several native species of fish we continue to stock in recent years.

We also are invested in our local community and the folks that live and work nearby. We do our best to shop local where we can and to volunteer and be involved both civically, while also just being the best neighbors we know how to be.









# AGRITOURISM

Where tourism and agriculture meet. We're proud of the State of Kansas and their efforts to continue supporting family farms, ranches, orchards, wineries, outfitters and other ag operations that are all part of the rural lifestyle here in Kansas.

The Red Rock Guest Ranch was one of the first handful of businesses to be a registered agritourism entity. In fact our owners were privileged to be part of some of the initial legislative committee hearings and meetings that would continue a path towards the legislation that currently helps support many of the agritourism benefits that a business can now enjoy.

These efforts are not everything and we certainly played only a small, small part, but as you visit Kansas hopefully you have the opportunity to see our state and people at their best, and doing what has made our area the blessing it is to live in.

*As with all of life, and especially that which happens in the great outdoors or with animals domesticated or wild, there is a certain amount of risk and uncertainty with activities at the ranch. While we seek to mitigate these risks the best we can as your hosts, we would ask you as well to consider and weigh the risks of any activity both shared here and that you encounter while on the property. If you ever encounter a situation where you need help, feel unsafe or are unsure, please let us know! We'd love for you to enjoy your stay safely!*

## agritourism

noun

ag·ri·tour·ism | \ a-gri-tur-i-zm

1. the crossroads of tourism and agriculture. 2. a form of commercial enterprise that links agricultural production and/or processes with tourism in order to attract visitors onto a farm, ranch, or other agricultural business for the purposes of entertaining and/or educating the visitors and helping sustain farm, ranch, or businesses enterprises.

(<https://nationalaglawcenter.org/overview/agritourism/>)





## You might see posted around...

**"Under Kansas law, there is no liability for an injury or death of a participant in a registered agritourism activity conducted at this registered agritourism location if such injury or death results from the inherent risks of such agritourism activity. Inherent risks of agritourism activities include, but shall not be limited to, the potential of you as a participant to act in a negligent manner that may contribute to your injury or death and the potential of another participant to act in a negligent manner that may contribute to your injury or death. You are assuming the risk of participating in this registered agritourism activity."**

The Red Rock Guest Ranch is a registered Agritourism business with the Kansas Department of Wildlife, Parks and Tourism. This business is eligible for the limited liability as per K.S.A. 32-1434, the Kansas Agritourism Promotion Act.



# The Red Rock

Guest Ranch

4340 270th Rd., Soldier, Ks 66540  
(o) 785.834.2552 / (c) 785.364.7115  
[www.theredrockguestranch.com](http://www.theredrockguestranch.com)  
[theredrockguestranch@gmail.com](mailto:theredrockguestranch@gmail.com)